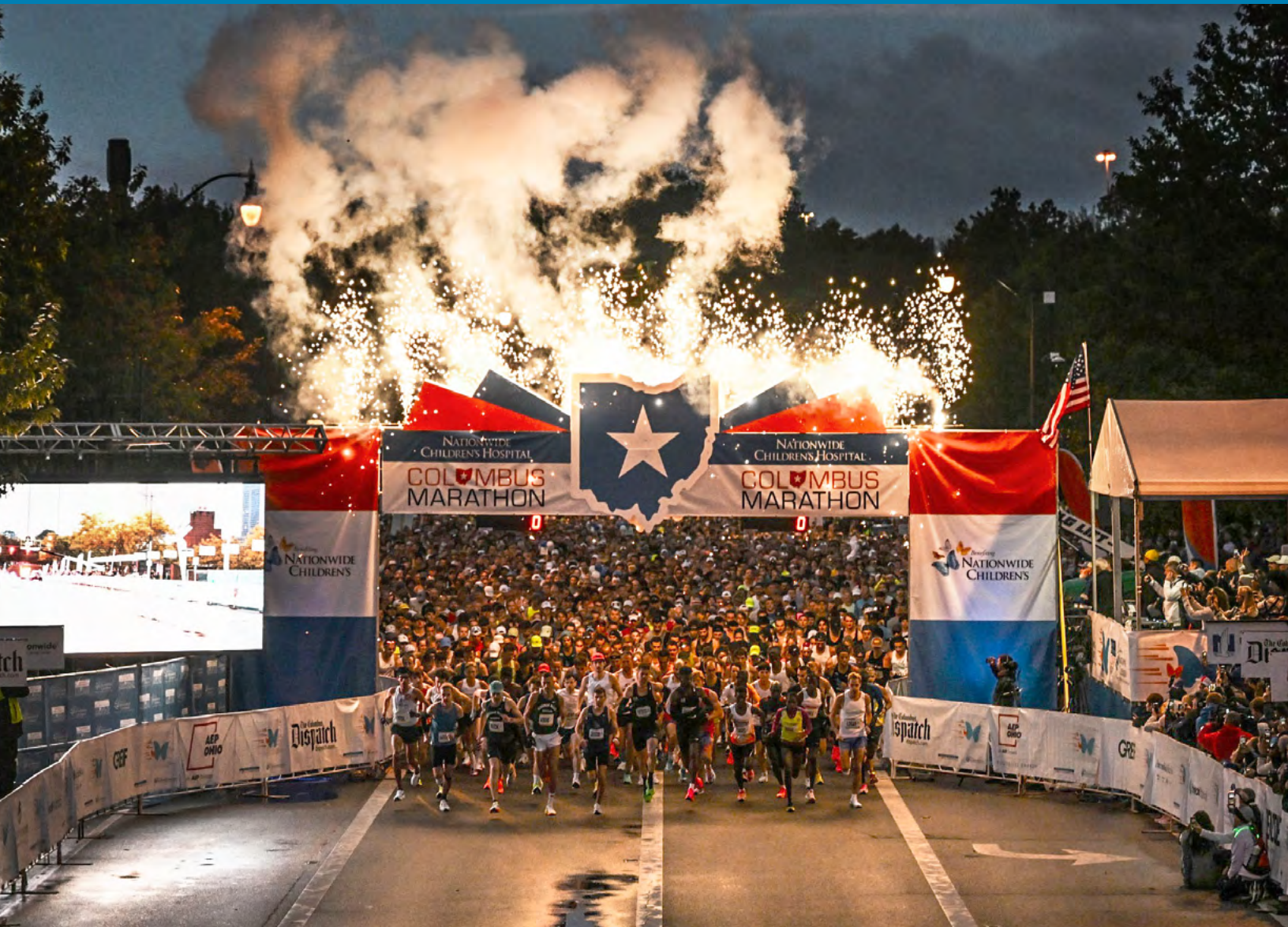


INSTRUCTIONS & INFORMATION



NATIONWIDE
CHILDREN'S HOSPITAL
COLUMBUS
MARATHON

10.20.24

**NATIONWIDE
CHILDREN'S HOSPITAL
COLUMBUS
MARATHON**

**44th Nationwide
Children's Hospital
Columbus Marathon**

**18th Nationwide
Children's Hospital
Columbus 1/2 Marathon**

10.20.24



Schedule of Events 2

Health & Fitness Expo 3

 Expo Hours, Location & Directions 3

 Expo Parking 3

 Packet Pick Up 4

Race Day 5

 Parking & Race Day Traffic Solutions 5

 Parking Garages Map 8

 Course Maps 9

 Pace Charts 11

 Restrooms 12

 Family Tent 12

 Corrals & Pace Teams 13

 Race Timing 13

 Race App 14

 Gear Bags 15

 Fluid Stations 16

 Medical Support 16

 Affixing Your Bib 16

 Athlete Only Area 16

 Entertainment 17

 Race Rules 18

 Wheelchair Athletes 19

 Children's Champions 20

 2024 Marathon Mile Champions 21

 Inclement Weather Policy 23

 Emergency Action Plan 24

 Weather Outlook 25

 Finish Area 26

Celebration Village 27

 Location, Activities, Map 27

General Information 28

 Downtown Columbus Map with Hotels .. 28

 Course Highlights 29

 Self-Guided Bike Tour 31

 Getting Around Columbus 32

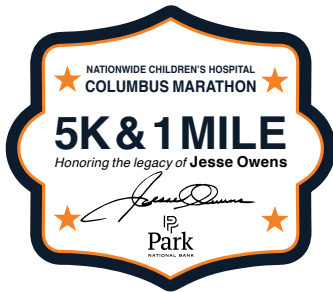
Sponsors 33

OCTOBER 18–20, 2024



FRIDAY **SATURDAY**
18 & 19
NOON – 7:00 PM 9:00 AM – 6:00 PM

**Greater Columbus
Convention Center**
Exhibit Hall D
400 N. High Street
Columbus, OH 43215



SATURDAY
19
11:00 AM
5K & 1 Mile Start

North Bank Park
311 W. Long Street
Columbus, OH 43215



SATURDAY
19
12:30 PM Start

McFerson Commons
Corner of W. Spring St.
& McConnell Blvd.



SUNDAY
20
6:00 AM Corrals Open
7:25 AM Open Wheelchair Division Start
7:30 AM Marathon & 1/2 Marathon
Running and Walking Start

North Bank Park
311 W. Long Street
Columbus, OH 43215

Health & FITNESS EXPO

HEALTH & FITNESS EXPO

DESIGNATED EXPO PARKING

North Surface Lot

50 E. Goodale Street
Columbus, OH 43215

Goodale Garage

70 East Goodale Street
Columbus OH 43215

FRIDAY SATURDAY
18 & 19

NOON – 7:00 PM 9:00 AM – 6:00 PM

Greater Columbus Convention Center
Exhibit Hall D
400 N. High Street, Columbus, OH 43215

Special \$5 flat rate packet pick-up parking
(only at North Surface Lot & Goodale Garage during packet pick up hours)



PACKET PICK-UP

Pick up your 2024 Nationwide Children’s Hospital Columbus Marathon & 1/2 Marathon participant bib, T-shirt, bib tag timing device, and clear gear check bag at the **Health & Fitness Expo in Exhibit Hall D of the Greater Columbus Convention Center.**

EXPO HOURS:

FRIDAY, OCT 18 • NOON – 7:00 PM
SATURDAY, OCT 19 • 9:00 AM – 6:00 PM

(Note: Athletes will receive the race t-shirt and finisher medal corresponding to the event in which they are entered, i.e., someone registered for the full marathon will receive a marathon t-shirt and medal, even if they signed up for the full marathon but only intend to complete the 1/2 Marathon. No exceptions.)



PROXY PACKET PICK-UP

Friends or family member picking up your number for you?

If you are picking up a race packet for someone else, you will need to first visit the “Proxy Pick Up station” and show:

1. Your ID
2. The participant’s ID you’re picking up for (a clear photo of the ID on a phone or smart device is acceptable)
3. **Completed Proxy Form**



**NATIONWIDE CHILDREN'S HOSPITAL
 COLUMBUS MARATHON**

PROXY PACKET PICKUP

RUNNER'S NAME _____

YOUR NAME _____

YOUR PHONE # _____

Copy of Runner ID Present PROXY ID Checked CR

APPROVED _____

- If any of the information is missing on the form, it will not be approved; and
- **No person may pick up more than two (2) race numbers in addition to their own.**

Whenever possible, participants should attend the Expo in person and pick up their own bibs. We recognize that personal and professional emergencies may arise, and proxy is intended as a stopgap for those circumstances that conflict with attending the Expo. Using proxy pickup as a method in which to use another participant’s race number is strictly prohibited and may result in disqualification from all future events.

While the process will remain the same as in prior years, you may experience increased scrutiny on proxy pickups this year. And a reminder: While we allow “proxy” pickup as a service for our runners, only the registered runner may run the race with the bib.

PARKING & RACE DAY TRAFFIC SOLUTIONS

There are more than 15,000 parking spaces in the Arena District, close to the combined Start & Finish Line. Alleviate some stress on Race Day by purchasing your **parking pass in advance online here**.

Get Downtown Early on Race Day

Make plans PRIOR to race day to get downtown and into your parking spot well before the Race starts at 7:30 AM. How early? **The Corrals open at 6 AM, so plan accordingly!**

HERE ARE SOME TIPS:

- Think of how long it takes to get into downtown Columbus from your home or where you are staying. Got that number? Now double it! With thousands of people making their way to the Start Line at the same time, you'll need extra time to get where you want to be.
- We recommend carpooling. It cuts down on traffic and parking problems for all and will save you money!
- Check out **CoGo Bike Sharing** (there are several bike stations within walking distance of the start/finish), taxis or Uber and Lyft for an alternative to driving downtown.
- Make sure you know about any road closings/construction that may get in your way of being in your corral early. Check out **OhGO.com** for the latest road construction information, including weekend work.

If you review the above items thoroughly and make your plan a few days ahead of time, you should enjoy an easy, unhurried, unstressed start to your big day. Again, the start line corrals open at 6 am.



PARKING & RACE DAY TRAFFIC SOLUTIONS

Note street closures at the START/FINISH when planning how to access parking:

- Long St. will be closed between High St. to the East and Hocking St. to the West.
- Spring St. will be closed from West St. to the East, and Hocking St. to the West.
- Neil Ave. will be closed from Nationwide Blvd. on the North to the combined Start/Finish Line to the South. (Limited access allowed to parking garages just south of Nationwide Blvd.—signage will be posted.)

DIRECTIONS TO PARKING FROM THE **NORTH**:

I-71 SOUTH TO I-670 WEST

EXIT AT THIRD ST. (ON THE LEFT)

Take Third St. to Chestnut St.

Right onto Chestnut St.

Choose a parking garage on Chestnut St.
(Alternately with this route)

Continue on Chestnut St. to High St.

Right onto High Street

Take High St. to Nationwide Blvd.

Left onto Nationwide Blvd.

Proceed on Nationwide Blvd. to available parking throughout the Arena District.

OR

I-71 SOUTH TO I-670 WEST

EXIT AT NEIL AVE.

Left onto Neil Ave.

Proceed on Neil Ave. to available parking throughout the Arena District.

OR

ST. RT. 315 SOUTH TO I-670 EAST

EXIT AT NEIL AVE.

Right onto Neil Ave.

Proceed on Neil Ave. to available parking throughout the Arena District.

DIRECTIONS TO PARKING FROM THE **SOUTH**:

I-71 NORTH (DO NOT MERGE onto St. Rt. 315 North)

EXIT AT FOURTH ST.

Left onto Fourth St.

Fourth St. to Nationwide Blvd.

Left onto Nationwide Blvd.

Proceed on Nationwide Blvd. to available parking throughout the Arena District.



PARKING & RACE DAY TRAFFIC SOLUTIONS

DIRECTIONS TO PARKING FROM THE **EAST**:

I-70 WEST TO MOUND ST.

Right onto Fourth St.

Fourth St. to Nationwide Blvd.

Left onto Nationwide Blvd.

Proceed on Nationwide Blvd. to available parking throughout the Arena District.

OR

I-670 WEST

EXIT AT NEIL AVE.

Right onto Neil Ave.

Proceed on Neil Ave. to available parking throughout the Arena District.

DIRECTIONS TO PARKING FROM THE **WEST**:

I-70 EAST TO I-670 EAST

I-670 EAST TO GRANDVIEW AVE.

Right onto Grandview Ave.

Grandview Ave. to Goodale St.

Right onto Goodale St.

Goodale St. to Neil Ave.

Right onto Neil Ave. to available parking in Arena District.

OR

I-70 EAST TO EXIT FOR FOURTH ST.

Turn left onto Fourth St.

Fourth St. to Nationwide Blvd.

Left onto Nationwide Blvd.

Proceed on Nationwide Blvd. to available parking throughout the Arena District.

OR

I-670 EAST TO NEIL AVE.

Right onto Neil Ave.

Proceed on Neil Ave. to available parking throughout the Arena District.

PURCHASE PARKING AHEAD OF TIME

[Click here in order to purchase your Race Day parking pass](#) in the Arena District ahead of time. NOTE: your pre-paid pass is only valid at the location in which it is purchased for.

We highly recommend making plans PRIOR to race day to get downtown and into your parking spot well before the Race starts at 7:30 AM. How early? The Corrals open at 6:00 AM, so plan accordingly!

ARENA DISTRICT PARKING MAP



arenadistrict.parkmobile.io

FULL MARATHON COURSE MAP



NATIONWIDE CHILDREN'S HOSPITAL

COLUMBUS MARATHON

10.20.2024
COURSE MAP

26.2

1/2 MARATHON COURSE MAP

NATIONWIDE CHILDREN'S HOSPITAL COLUMBUS MARATHON

10.20.2024 COURSE MAP

13.1



PACE CHART

	Mile	Estimated 1st WHEELCHAIR		Estimated 1st RUNNER		Median RUNNER PACE		Course CLOSING TIME					
								1/2 Marathon		Full Marathon			
Marathon & 1/2 Marathon	Start	7:26 AM		7:30 AM		Approx:	7:45 AM	Approx:	8:00 AM		Approx:	8:00 AM	
	1	0:03:50	7:29 AM	0:04:45	7:34 AM	0:09:10	7:54 AM	0:16:00	8:16 AM				
	2	0:07:40	7:33 AM	0:09:30	7:39 AM	0:18:20	8:03 AM	0:32:00	8:32 AM				
	3	0:11:30	7:37 AM	0:14:15	7:44 AM	0:27:30	8:12 AM	0:48:00	8:48 AM				
	4	0:15:20	7:41 AM	0:19:00	7:49 AM	0:36:40	8:21 AM	1:04:00	9:04 AM				
	5	0:19:10	7:45 AM	0:23:45	7:53 AM	0:45:50	8:30 AM	1:20:00	9:20 AM				
	6	0:23:00	7:49 AM	0:28:30	7:58 AM	0:55:00	8:40 AM	1:36:00	9:36 AM				
	7	0:26:50	7:52 AM	0:33:15	8:03 AM	1:04:10	8:49 AM	1:52:00	9:52 AM				
	8	0:30:40	7:56 AM	0:38:00	8:08 AM	1:13:20	8:58 AM	2:08:00	10:08 AM				
	9	0:34:30	8:00 AM	0:42:45	8:12 AM	1:22:30	9:07 AM	2:24:00	10:24 AM				
	10	0:38:20	8:04 AM	0:47:30	8:17 AM	1:31:40	9:16 AM	2:40:00	10:40 AM				
	11	0:42:10	8:08 AM	0:52:15	8:22 AM	1:40:50	9:25 AM	2:56:00	10:56 AM				
	12	0:46:00	8:12 AM	0:57:00	8:27 AM	1:50:00	9:35 AM	3:12:00	11:12 AM				
	LONG ST & HIGH 12.5	0:47:55	8:13 AM	0:59:23	8:29 AM	1:54:35	9:39 AM	3:20:00	11:20 AM		3:06:05	11:06 AM**	
	13	0:49:50	8:15 AM	1:01:45	8:31 AM	1:59:10	9:44 AM	3:28:00	11:28 AM		3:13:31	11:13 AM	
	1/2 MARATHON 13.1	0:50:13	8:16 AM	1:02:14	8:32 AM	2:00:05	9:45 AM	3:29:36	11:30 AM		3:15:00	11:15 AM	
	14	0:53:40	8:19 AM	1:13:30	8:43 AM	2:08:20	9:53 AM			3:28:24	11:28 AM		
	15	0:57:30	8:23 AM	1:18:45	8:48 AM	2:17:30	10:02 AM			3:42:17	11:43 AM		
	16	1:01:20	8:27 AM	1:24:00	8:54 AM	2:26:40	10:11 AM			3:58:10	11:58 AM		
	17	1:05:10	8:31 AM	1:29:15	8:59 AM	2:35:50	10:20 AM			4:13:03	12:13 PM		
	18	1:09:00	8:35 AM	1:34:30	9:04 AM	2:45:00	10:30 AM			4:27:56	12:28 PM		
	19	1:12:50	8:38 AM	1:39:45	9:09 AM	2:54:10	10:39 AM			4:42:49	12:43 PM		
	20	1:16:40	8:42 AM	1:45:00	9:15 AM	3:03:20	10:48 AM			4:57:42	12:58 PM		
	21	1:20:30	8:46 AM	1:50:15	9:20 AM	3:12:30	10:57 AM			5:12:35	1:12 PM		
	22	1:24:20	8:50 AM	1:55:30	9:25 AM	3:21:40	11:06 AM			5:27:28	1:27 PM		
	23	1:28:10	8:54 AM	2:00:45	9:30 AM	3:30:50	11:15 AM			5:42:21	1:42 PM		
24	1:32:00	8:58 AM	2:06:00	9:36 AM	3:40:00	11:25 AM			5:57:14	1:57 PM			
25	1:35:50	9:01 AM	2:11:15	9:41 AM	3:49:10	11:34 AM			6:12:07	2:12 PM			
26	1:39:40	9:05 AM	2:16:30	9:46 AM	3:58:20	11:43 AM			6:27:00	2:27 PM			
FINISH LINE 26.2	1:40:26	9:06 AM	2:17:33	9:47 AM	4:00:10	11:45 AM			6:30:00	2:30 PM			

** Denotes course cut-off point. Marathon runners/walkers that do not make it to the corner of Long Street and High Street by the closure time noted will be diverted directly to the finish line to complete a 1/2 marathon.

RESTROOMS

Everyone has to go to the bathroom, and on race day, everyone has to go at the same time. We will have 500 portable bathrooms available at our Start Line as well as along our Course.

- In the "Athlete-Only" Start Area, there will be portable bathrooms in ALL Starting Corrals!
- Portable bathrooms also are located just past every fluid station on the course. See course maps for both races on pages 9 and 10.
- For those who don't want to wait as long, Children's Champions will have special access to restrooms at the start. Or should we say a "VIPee" trailer, complete with running water! [Click here register to become a Children's Champion.](#)

LACTATION / BABY CHANGING STATION

This tent will provide a space for athletes and spectators who need to change their babies and breastfeed or pump. The tent will be located by the Dick's Sporting Goods Gear Check Tent at the south end of McFerson Commons on Spring Street on Race Day!

LACTATION



BABY CHANGING



BABY
CHANGING
STATION



NURSING
MOTHERS
ONLY

CORRALS

Athletes will need to enter at the “Athlete Only” signs at the intersection of Neil and Spring Streets and make their way to their corral. There will be four corrals. If your estimated finishing time has drastically changed since you registered, please visit the CORRAL SOLUTIONS booth at the Expo to be placed in the proper corral. If you’d like to be in a later corral than your current assignment, simply move back Race morning. A recent race result may be requested for significant changes.

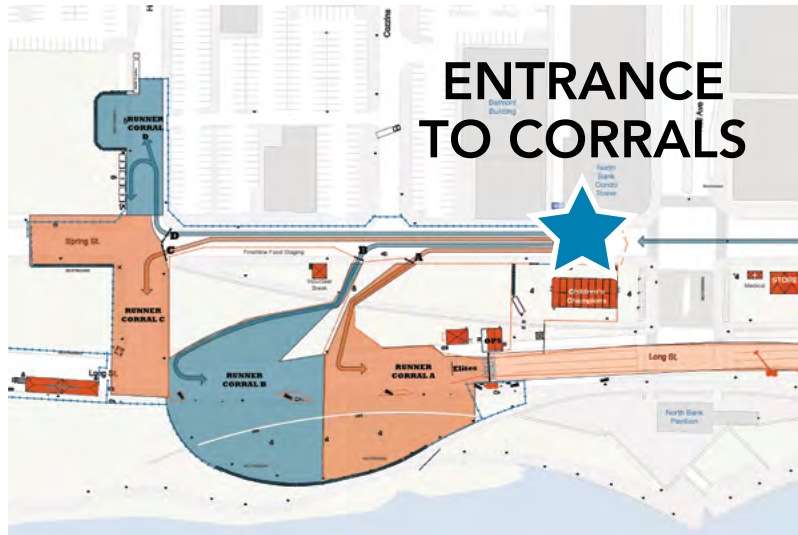
We are thrilled to welcome back the Striding Sliders Pace Team, sponsored by White Castle! **Pace teams will be offered for the following finish times:**

½ Marathon: 1:30, 1:37, 1:45, 1:50, 1:55, 2:00, 2:15, 2:30 and 2:45

Marathon: 3:00, 3:15, 3:30, 3:40, 3:50, 4:00, 4:15, 4:30, 4:45, 5:00 and 5:30

TIMING

The Columbus Marathon will be using the BibTag timing device. The BibTag is an all-weather tag that will be placed on the back of your bib to record your time. You **MUST** wear your bib on the outside of your clothing in order for the BibTag to work correctly. Do **NOT** fold or bend your bib.



RTRT.me MOBILE APP

Live results are now available via web for free!

Download the RTRT.me Mobile App and select the 2024 Columbus Marathon event. Participants, family and friends can all use Real-Time Race Tracking to share in the excitement.

Sign up now to have race progress texted to your mobile phone. On Race Day, spectators can get status of participants in real-time using the Live Tracker & Leaderboard. Details such as time, pace, position on the map and estimated finish will be instantly available. **The information will be based on six checkpoints along the course — Start, 7K, 15K, 13.1 miles, 20 miles and Finish.**

RTRT.ME LIVE RESULTS FEATURES INCLUDE:

- **Live Web Tracker** – See times and current pace within seconds of a participant crossing each split point. Estimated times will be provided based on current pace.
- **Live Leaderboard** – See who is winning via the Live Leaderboard. Top runners in each category will be displayed in real-time as they lead the way through the course.
- **Live Map Tracking** – Participant locations will be plotted on the Interactive Course Map as progress is made on course. The position of each participant is estimated based on the most recent timing received from the bib read. NOTE: Participants do not need to carry their phones for this feature to work.
- **Split Alerts** – Track your athlete via the RTRT.me mobile app's push messages at various points along the Marathon and 1/2 Marathon courses.
- **Mobile App** – Features include Live Participant Tracking, Push Notifications, Leaderboards, Map Tracking, Event Messages, Event Info and more!

**PLEASE NOTE: Times posted during the event are Unofficial.
Official results are posted upon completion of the event.*



GEAR BAGS

Start line gear bag rules will be strictly enforced.

In our Start Area, and specifically at the Dick's Sporting Goods Gear Check Tent, we enforce rules to create as safe an environment as possible. Gear Check will be available for free at the south end of McFerson Park, at the intersection of Spring St. and McConnell Blvd.

We will ONLY accept the CLEAR Gear Check Bags you receive at the Health & Fitness Expo during your packet pick-up. ALL items you wish to check must be in these bags. We will NOT accept any other bags, boxes, luggage, etc. NO EXCEPTIONS.

NOTE: All items being carried at or near the Nationwide Children's Hospital Columbus Marathon & ½ Marathon are subject to inspection, including Camelbaks and personal hydration devices.



FLUID STATIONS



There are 17 Fluid Stations along the course, supplying Gatorade Lemon Lime Endurance Formula® at the first set of tables and non-carbonated water at the second set of tables. Additionally, you may wear a small hydration pack, fanny pack or fluid belt or carry a water bottle, but this may be subject to inspection as noted above. **NO BACKPACKS** are to be worn by athletes on the race course.



We will also feature GU Energy Gels at approximately miles **15.5 & 20.5**.

MEDICAL SUPPORT



Certified medical personnel are located in the Start/Finish areas and at two locations along the race course to assist athletes. **PLEASE FILL OUT THE MEDICAL INFORMATION on the back of your race number.** Every second counts in an emergency, and this information could be crucial! In the event an athlete is unable to continue, report to one of these locations or the nearest water stop for assistance. Red Cross sweep vehicles will pick up disabled athletes for transport to the Finish Line. The medical staff has the right to withdraw any athletes from the race who appear in distress or at risk. Minor medical aid (i.e. band-aids or Vaseline) can be found at each fluid station.

RACE BIB

- Pin your race number on the front of your shirt (don't cover with other clothing). Do not fold, bend, or tear your number in any way.
- Wheelchair participants: Pin your race number on the back of your shirt.

ATHLETE ONLY AREA

Only athletes with bib numbers will be allowed into the athlete-only area and the start line corrals and finish chute. The athlete-only area is the area west of Neil Ave. (Spring and Long Streets west of Neil Ave.). Spectators will be allowed east of Neil Ave in Celebration Village and at the grassy area at the Start Line.

FOR YOUR ENTERTAINMENT

2024 Nationwide Children’s Hospital Columbus Marathon will feature thousands of participants — which means there will be tens of thousands of spectators throughout the 26.2-mile course. This year, there will be live bands, entertainers and DJs lining the course to keep the party going.

MILE MARKER	BAND/DJ NAME	MILE MARKER	BAND/DJ NAME
1.6	Jason Nestor	13.5	Columbus Wedding DJ Tom
2	cJazzic Soul Band	15	Blues Therapy
2.6	Royal Tomato	15.3	DJ Ski
3	River 104.9	16	Eric Chin
3.2	Polka Sistas	17.2	Juan Leon
3.6	DJ Big Ticket	17.6	Craig Watkins
3.7	LoudMouf	18	Cols Folk Music Society
4	Prophocey	19.6	Intermittent Animals
5.1	DJ Lil Man	20.5	Tim O’Connor
5.6	DJ Daze Jr.	20.7	Jaime Tolbert
5.8	DJ Brian Daze	21.2	Top Priority Band
6.2	Garrett Bevelander	21.4	The Bughounds
7.4	For Pete’s Sake	21.6	Bryan Olsheski
8.2	Paul Brennan	22.1	Flugazy
8.5	SnagaDj.com	23	DJ RUN 3 RAY
8.6	Nachos	23.5	DJ Industrial Badger
9.1	Clave Sonic	24.6	Tim Owings
9.4	Brian Yinger	25	Aye Dizzle
9.5	Livingston UMC		
9.8	Sam Corlett	Start/ Finish	DJ Matty Sexton
10.5	614-ROCK		
11.2	DJ Big Ticket	Announcers	
11.4	Radio U	A1	Michael Kelly
11.7	Jason Turpening	A2	Karl Gruber
11.9	Barstool Profits	A3	Amy Liss
12.3	100 Proof		
12.9	DJ Pish		
13.1	Mothman		

RACE RULES

Violation of any of these rules may result in disqualification.

There are no exceptions to the rules:

- Everything needed for a successful race is available from official marathon fluid or medical stations. If you need something specific, you should carry it with you.
- Non-registered runners may not run any part of the course. Course monitors and police have authority to remove unregistered runners from the course. **This includes children running in with parents at the finish.** Anyone who does this risks disqualification and a ban from future events.
- The only wheeled vehicles permitted on the course are official wheelchair entrants, official pace vehicles, official bicycle spotters and approved wheeled devices. No baby strollers, dogs, in-line skates or scooters allowed.
- Full marathon participants who are not maintaining a 14:54-minute mile pace and who don't make it to High & Long St. by 11:06 AM will be urged to head to the finish line where they will be credited with an official 1/2 marathon finishing time and will receive other race participant benefits, including finish line food. If an athlete chooses to continue following along the marathon course, they will do so at their own risk. The water stops, entertainment areas, portable bathrooms, medical support, and Police and Fire/EMS services will all be shut down. Also, the Finish Line will be closed at 2:30 p.m. in keeping with our stated 6 1/2 hour course closure rule, so if anyone arrives after that time, they will not receive an official time for completing the race.

Athletes will receive the finisher's medal corresponding to the type of bib they are wearing, i.e., someone wearing a full marathon bib will receive a full marathon medal, even if they only complete the 1/2 Marathon.

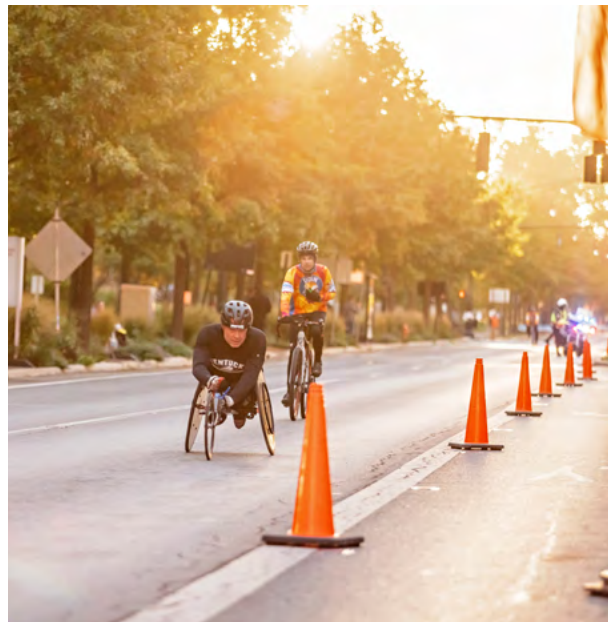


WHEELCHAIR ATHLETES

All wheelchair athletes should check in Race Morning at the Wheelchair Athlete Tent at the corner of Spring and West Streets. Athletes will drop off their gear check bags there. Prior to the start of the race, the wheelchair athletes will be escorted to the Start Line.

The wheelchair division starts at 7:25 AM.

Please note: Due to safety concerns, handcycles are not permitted in the Nationwide Children's Hospital Columbus Marathon & 1/2 Marathon.



CHILDREN’S CHAMPIONS

Children’s Champions are Columbus Marathon & 1/2 Marathon participants who choose to run, walk or cheer the marathon or 1/2 marathon while fundraising for Nationwide Children’s Hospital. There is no minimum fundraising requirement, but Children’s Champions have the opportunity to earn a variety of benefits, based on the amount they raise for the hospital.

Children’s Champions get to run through the course knowing that they are helping all of the Marathon Mile Champions that line the streets. They help Nationwide Children’s to provide the highest quality care to every child, regardless of a family’s ability to pay. **You can still sign up here.** You may register as an individual, create a team or join an existing team, plus help recruit additional Children’s Champions and raise money for the hospital. Do what you can for Kids, Cures & Miracles.



NATIONWIDE CHILDREN'S HOSPITAL 2024 MARATHON MILE CHAMPIONS

You can read more about these incredible Marathon Mile Champions' stories here.

<p>START FINISH</p> <p>NATIONWIDE CHILDREN'S HOSPITAL COLUMBUS MARATHON</p>   <p>MARATHON MILE CHAMPION ALLISON</p> <p>Sponsored by NATIONWIDE CHILDREN'S HOSPITAL COLUMBUS MARATHON</p>	<p>MILE</p> <p>1</p> <p>NATIONWIDE CHILDREN'S HOSPITAL COLUMBUS MARATHON</p>   <p>MARATHON MILE CHAMPION JOE</p> <p>Sponsored by SCHNEIDER DOWNS Big Thinking. Personal Focus.</p>	<p>MILE</p> <p>2</p> <p>NATIONWIDE CHILDREN'S HOSPITAL COLUMBUS MARATHON</p>   <p>MARATHON MILE CHAMPION CLAIRE</p> <p>Sponsored by GREIF</p>	<p>MILE</p> <p>3</p> <p>NATIONWIDE CHILDREN'S HOSPITAL COLUMBUS MARATHON</p>   <p>MARATHON MILE CHAMPION ARIA</p> <p>Sponsored by Abercrombie & Fitch Co.</p>	<p>MILE</p> <p>4</p> <p>NATIONWIDE CHILDREN'S HOSPITAL COLUMBUS MARATHON</p>   <p>MARATHON MILE CHAMPION EMERSEN</p> <p>Sponsored by LEADER PROMOS MARKETING AGENCY</p>	<p>MILE</p> <p>5</p> <p>NATIONWIDE CHILDREN'S HOSPITAL COLUMBUS MARATHON</p>   <p>MARATHON MILE CHAMPION REILLY ROSE</p> <p>Sponsored by NATIONWIDE CHILDREN'S HOSPITAL COLUMBUS MARATHON</p>	<p>MILE</p> <p>6</p> <p>NATIONWIDE CHILDREN'S HOSPITAL COLUMBUS MARATHON</p>   <p>MARATHON MILE CHAMPION ALEX</p> <p>Sponsored by Coca-Cola CONSOLIDATED</p>
<p>MILE</p> <p>7</p> <p>NATIONWIDE CHILDREN'S HOSPITAL COLUMBUS MARATHON</p>   <p>MARATHON MILE CHAMPION ETHAN</p> <p>Sponsored by bread financial.</p>	<p>MILE</p> <p>8</p> <p>NATIONWIDE CHILDREN'S HOSPITAL COLUMBUS MARATHON</p>   <p>MARATHON MILE CHAMPION BELLA</p> <p>Sponsored by Safelite</p>	<p>MILE</p> <p>9</p> <p>NATIONWIDE CHILDREN'S HOSPITAL COLUMBUS MARATHON</p>   <p>MARATHON MILE CHAMPION LILY</p> <p>Sponsored by The Columbus Dispatch dispatch.com</p>	<p>MILE</p> <p>10</p> <p>NATIONWIDE CHILDREN'S HOSPITAL COLUMBUS MARATHON</p>   <p>Celebrating Our 2012-2023 Marathon Mile Champions</p> <p>ENCORE MILE</p> <p>NATIONWIDE CHILDREN'S HOSPITAL COLUMBUS MARATHON</p>	<p>MILE</p> <p>11</p> <p>NATIONWIDE CHILDREN'S HOSPITAL COLUMBUS MARATHON</p>   <p>Honor. Remember. Celebrate.</p> <p>ANGEL MILE</p> <p>NATIONWIDE CHILDREN'S HOSPITAL COLUMBUS MARATHON</p>	<p>MILE</p> <p>12</p> <p>NATIONWIDE CHILDREN'S HOSPITAL COLUMBUS MARATHON</p>   <p>MARATHON MILE CHAMPION ALI</p> <p>Sponsored by Nationwide is on your side.</p>	<p>MILE</p> <p>13</p> <p>NATIONWIDE CHILDREN'S HOSPITAL COLUMBUS MARATHON</p>   <p>MARATHON MILE CHAMPION ISABELLA</p> <p>NATIONWIDE CHILDREN'S HOSPITAL COLUMBUS MARATHON</p>

NATIONWIDE CHILDREN'S HOSPITAL 2024 MARATHON MILE CHAMPIONS

You can read more about these incredible Marathon Mile Champions' stories [here](#).

<p>MILE</p> <h1>14</h1> <p>NATIONWIDE CHILDREN'S HOSPITAL COLUMBUS MARATHON</p>   <p>MARATHON MILE CHAMPION CALLIE</p> 	<p>MILE</p> <h1>15</h1> <p>NATIONWIDE CHILDREN'S HOSPITAL COLUMBUS MARATHON</p>   <p>MARATHON MILE CHAMPION CARTER</p> 	<p>MILE</p> <h1>16</h1> <p>NATIONWIDE CHILDREN'S HOSPITAL COLUMBUS MARATHON</p>   <p>MARATHON MILE CHAMPION ISAIAH</p> 	<p>MILE</p> <h1>17</h1> <p>NATIONWIDE CHILDREN'S HOSPITAL COLUMBUS MARATHON</p>   <p>MARATHON MILE CHAMPION CODY</p> 	<p>MILE</p> <h1>18</h1> <p>NATIONWIDE CHILDREN'S HOSPITAL COLUMBUS MARATHON</p>   <p>MARATHON MILE CHAMPION KASH</p> 	<p>MILE</p> <h1>19</h1> <p>NATIONWIDE CHILDREN'S HOSPITAL COLUMBUS MARATHON</p>   <p>MARATHON MILE CHAMPION ELLIE</p> 	<p>MILE</p> <h1>20</h1> <p>NATIONWIDE CHILDREN'S HOSPITAL COLUMBUS MARATHON</p>   <p>MARATHON MILE CHAMPION DOMINIC</p> <p>Sponsored by</p> 
<p>MILE</p> <h1>21</h1> <p>NATIONWIDE CHILDREN'S HOSPITAL COLUMBUS MARATHON</p>   <p>MARATHON MILE CHAMPION STELLA</p> 	<p>MILE</p> <h1>22</h1> <p>NATIONWIDE CHILDREN'S HOSPITAL COLUMBUS MARATHON</p>   <p>MARATHON MILE CHAMPION A'NI-BRAXTON</p> 	<p>MILE</p> <h1>23</h1> <p>NATIONWIDE CHILDREN'S HOSPITAL COLUMBUS MARATHON</p>   <p>MARATHON MILE CHAMPION LILLYBETH</p> 	<p>MILE</p> <h1>24</h1> <p>NATIONWIDE CHILDREN'S HOSPITAL COLUMBUS MARATHON</p>   <p>MARATHON MILE CHAMPION BREELYN</p> 	<p>MILE</p> <h1>25</h1> <p>NATIONWIDE CHILDREN'S HOSPITAL COLUMBUS MARATHON</p>   <p>MARATHON MILE CHAMPION MACY</p> 	<p>MILE</p> <h1>26</h1> <p>NATIONWIDE CHILDREN'S HOSPITAL COLUMBUS MARATHON</p>   <p>MARATHON MILE CHAMPION MICHAEL</p> <p>Sponsored by</p> 	

The Nationwide Children’s Hospital Columbus Marathon & 1/2 Marathon puts the safety of its participants, spectators, staff and volunteers first. Dangerous weather conditions pose a unique challenge to an event this size. Therefore, we have adopted the following:

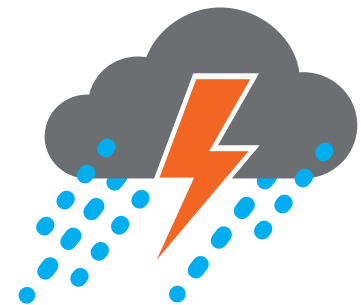
INCLEMENT WEATHER POLICY

Weather forecasts will be monitored prior to the event, with special attention placed on the possibility of heavy rain, thunder and lightning, high winds and extreme temperatures. If necessary, athletes will be made aware of these conditions and possible dangers which could result on the Nationwide Children’s Hospital Columbus Marathon website (www.columbusmarathon.com), as well as by other means of communications such as e-mail, X (formerly known as Twitter), Facebook, Instagram and the Real-Time Race Tracking app and public address announcements.

The Race Director and Medical Director, in consultation with law enforcement, fire/EMS and other officials, will monitor the weather and make a decision if any action will be taken to modify the race. Possible changes include: Altering the start time or in extreme situations, cancellation of the event. Visible lightning will cause the race to be postponed for a minimum of 30 minutes. Additional sightings will continue to delay the race in 30-minute increments.

If extremely high heat and humidity is predicted, extra water will be provided to the athletes, both prior to, during and after the event. The medical team will be alerted that athletes may require additional medical attention during and after the event due to these conditions. If it is felt that it is unsafe for participants to start the race due to severe temperatures and humidity, the race may be canceled.

Race personnel reserve the right to delay, cancel, or suspend the race due to inclement weather. Participants must abandon the race if ordered to do so by the race personnel, medical staff, fire or police personnel.



STAY SAFE!

As in past years, you should also sign up Race Week for **RTRT.me Mobile App** and enable alerts to be directly notified of changes in course conditions and emergency actions.

EMERGENCY ACTION PLAN FOR ATHLETES & SPECTATORS

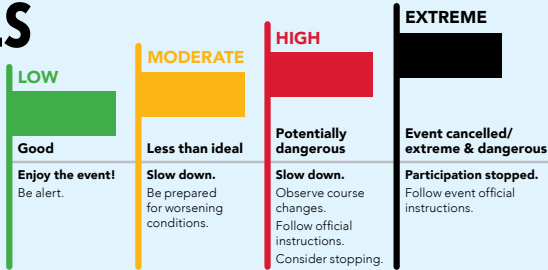
DANGEROUS WEATHER CONDITIONS & ON-COURSE EMERGENCIES pose a unique challenge to an event the size of a Marathon or 1/2 Marathon.

SAFETY IS #1

The Nationwide Children's Hospital Columbus Marathon & 1/2 Marathon puts the safety of its participants, spectators, staff and volunteers first.

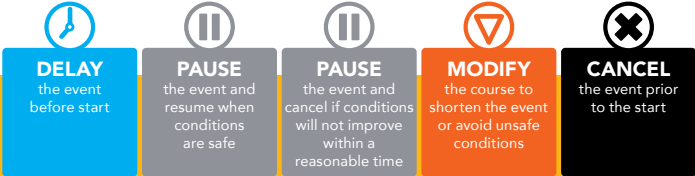
KNOW THE COURSE ALERT LEVELS

THE FLAG SYSTEM at each aid station will advise you of course conditions ahead.



KNOW THE POSSIBLE RESPONSES

ONE OF FIVE possible options in response to unsafe conditions on the course will be determined by race officials, in consultation with law enforcement, fire/EMS and other officials and communicated promptly with athletes, spectators and volunteers.



SEEK SHELTER



In the event of dangerous weather, adverse conditions or race cancellation, please seek shelter immediately.

All Police and Fire Personnel, as well as Water Stop and Course officials, can direct you to the nearest shelter and emergency transportation pick-up zones.



STAY INFORMED

Sign up for RT/RT.me Mobile App to receive special messaging in case of any weather or safety concerns.

NATIONWIDE CHILDREN'S HOSPITAL
COLUMBUS MARATHON

MARSHALL McPEEK'S WEATHER HISTORY

ABC6/Fox28 Chief Meteorologist Marshall McPeek has done a history of The Columbus Marathon race day weather since 2002 and it has been mostly great running conditions. We are looking forward to another incredible race day on Sunday!

Columbus Marathon Climatology

The average Columbus Marathon race day in the Columbus area is sunny with an early-morning low temperature around 41°F and a roughly 10% chance of rain or snow.

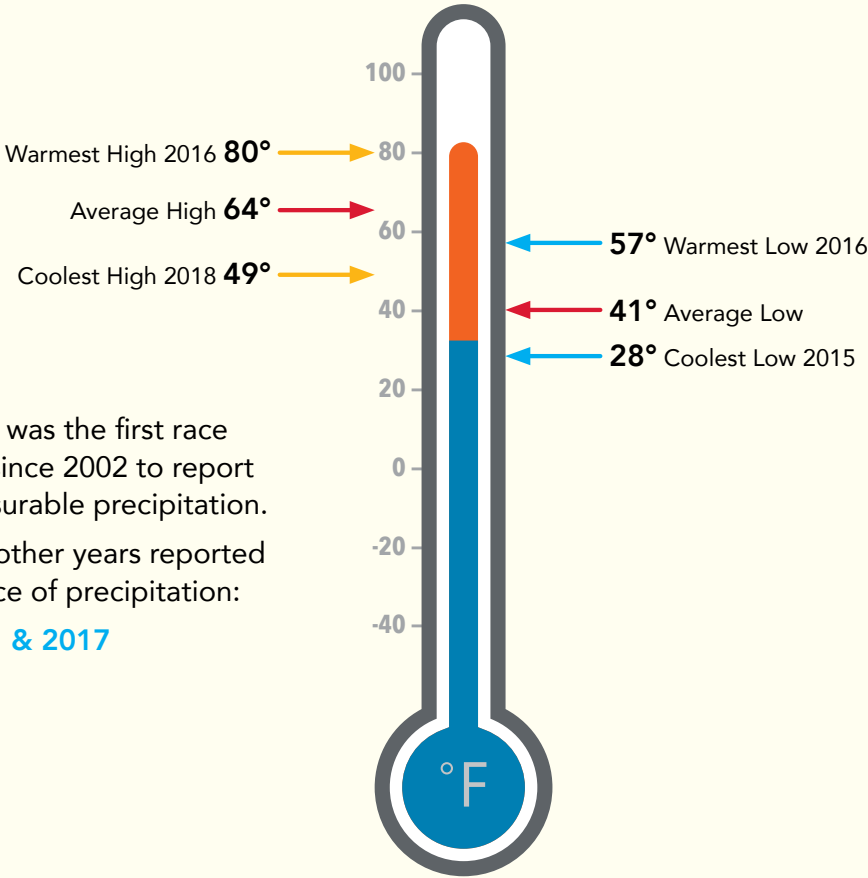


On Race Day, October 20, 2024, the sun will provide enough natural light for outdoor activities by 7:20 AM with sunrise at 7:48 AM. The Columbus Marathon starts at 7:30 AM.

Occurrence of Precipitation



2023 was the first race day since 2002 to report measurable precipitation. Two other years reported a trace of precipitation: **2011 & 2017**



Based on data for the Columbus area, marathon race days, 2002-2023. The 2020 Marathon was cancelled due to COVID-19 safety concerns. NOTE: Climatological data does not imply a forecast, only a review of past occurrences.

FINISH AREA

Upon crossing the finish line timing mat, your time will automatically be recorded. **DO NOT STOP** after you cross the Finish Line. Please move through the Finish area to receive a blanket, medal corresponding to the type of bib you are wearing, and refreshments — there will be a variety of fresh, sweet and salty foods, plus chocolate milk, waiting to tackle your hunger!

Note: Athletes will receive the finisher's medal corresponding to the type of bib they are wearing, i.e., someone wearing a full marathon bib will receive a full marathon medal, even if they only complete the 1/2 Marathon.

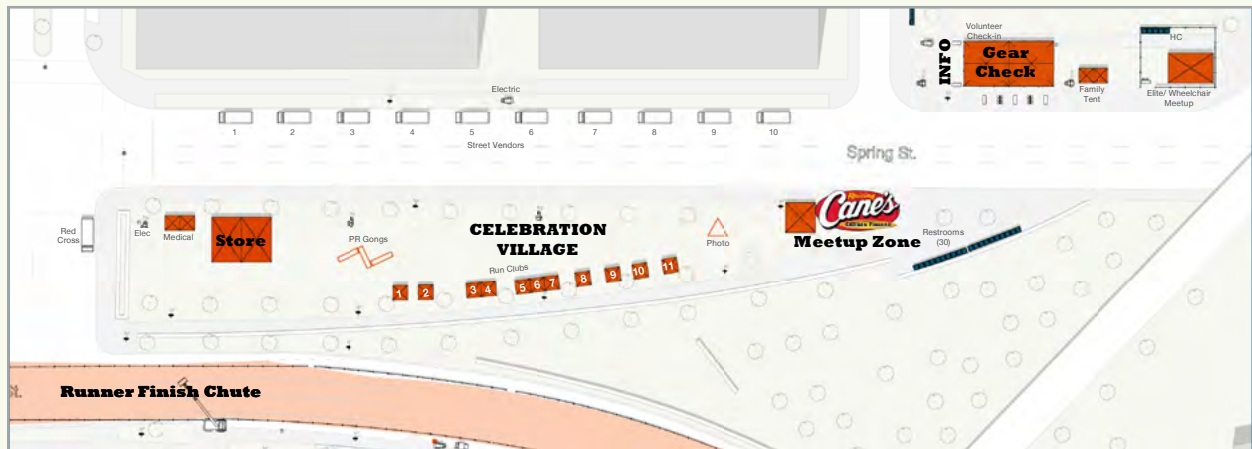


CELEBRATION VILLAGE

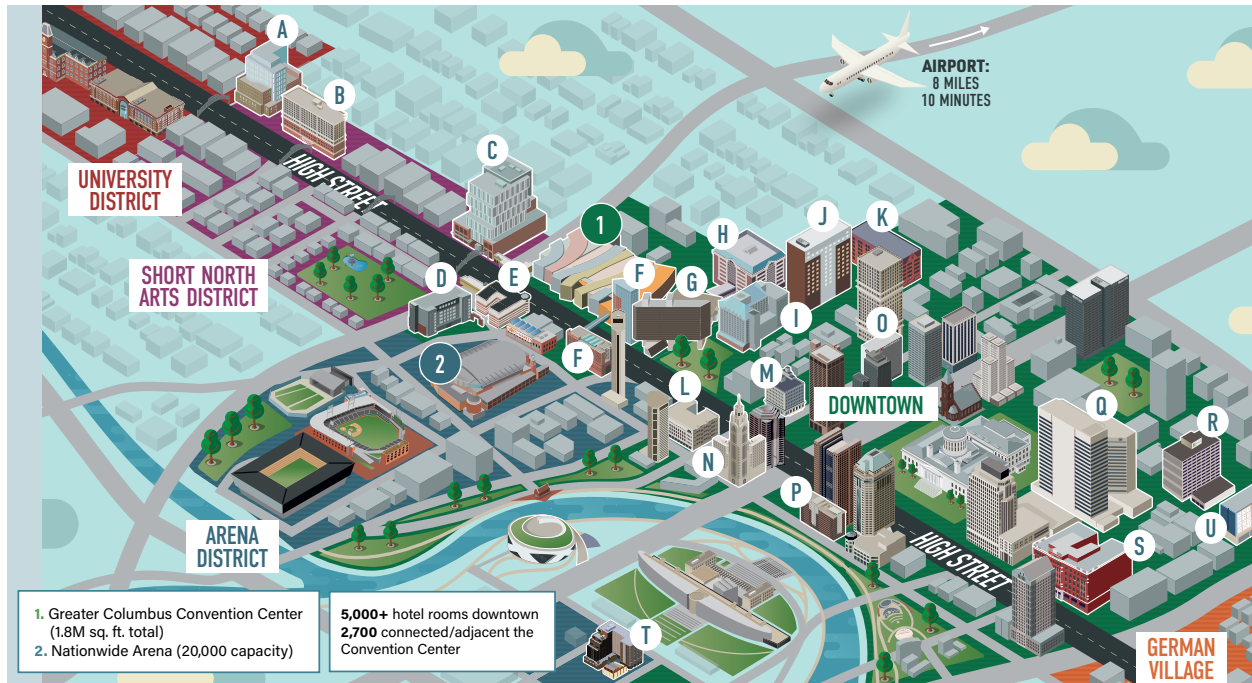
Celebration Village will be open to athletes and spectators alike.

Celebration Village will feature the following:

- **PR Gongs!** Set a personal record in the Marathon or 1/2 Marathon? (first-timers, the answer is automatically YES!) If so, visit the two PR Gongs sponsored by White Castle, and ring the gong!
- **Food Trucks!** We are happy to host food trucks this year, so bring some money for a post-race treat!
- **Columbus Marathon Store** Our partners at Columbus Running Company will have some great Nationwide Children's Hospital Columbus Marathon & 1/2 Marathon merchandise at the finish line to commemorate your experience.
- **Information Booth** This booth will be at the southwest corner of McFerson Park, at the corner of Spring St. and McConnell Blvd. (adjacent to Dick's Sporting Goods Gear Check Tent). The volunteers there will be equipped to handle questions ranging from how to track your athlete to how to get back to your hotel.
- **Raising Cane's Family Meet Up Zone** Catch up with family and friends to celebrate your accomplishment at the Raising Cane's Family Meet Up Zone!



COLUMBUS MEETING FACILITIES & HOTELS



- | | |
|---|---|
| <p>A. Moxy Columbus Short North
(116 rooms 6 blocks)</p> <p>B. Graduate Columbus
(171 rooms 4 blocks)</p> <p>C. Le Méridien Columbus, The Joseph
(135 rooms 2 blocks)</p> <p>D. AC Hotel Columbus Downtown
(160 rooms 1 block)</p> <p>E. Hampton Inn & Suites Columbus Downtown
(179 rooms Adjacent)</p> <p>F. Hilton Columbus Downtown
(1,000 rooms Connected)</p> <p>G. Hyatt Regency Columbus
(633 rooms Connected)</p> <p>H. Drury Plaza Hotel Columbus Downtown
(180 rooms Connected)</p> <p>I. Sonesta Columbus Downtown
(420 rooms Connected)</p> <p>J. Canopy by Hilton Columbus Downtown Short North
(168 rooms Adjacent)</p> <p>K. Red Roof PLUS+ Columbus Downtown – Convention Center
(143 rooms Adjacent)</p> | <p>L. Courtyard Columbus Downtown
(150 rooms 3 blocks)</p> <p>M. Residence Inn by Marriott Columbus Downtown
(126 rooms 5 blocks)</p> <p>N. Hotel LeVeque, Autograph Collection
(155 rooms 5 blocks)</p> <p>O. Renaissance Columbus Downtown Hotel
(408 rooms 5 blocks)</p> <p>P. DoubleTree Suites by Hilton Hotel Columbus Downtown
(194 rooms 6 blocks)</p> <p>Q. Sheraton Columbus at Capitol Square
(403 rooms 7 blocks)</p> <p>R. Holiday Inn Columbus Downtown Capitol Square
(240 rooms 8 blocks)</p> <p>S. The Westin Great Southern Columbus
(188 rooms 10 blocks)</p> <p>T. The Junto
(198 rooms 12 blocks)</p> <p>U. Home2 Suites by Hilton Columbus Downtown
(106 rooms 16 blocks)</p> |
|---|---|

COURSE HIGHLIGHTS

The Nationwide Children's Hospital Columbus Marathon & 1/2 Marathon features an exciting course. If you've never been a part of the start of the race in person, it's well worth your time.

- **26 Miles of Marathon Mile Champions** 24 miles are represented by a patient at Nationwide Children's, one is dedicated as an Angel Mile for the special children who have been taken too soon, and one is an "encore mile" for the Patient Champions from past years. These patients and their families will be along every mile of the course to cheer on participants and serve as a visual reminder of how the marathon is helping ill and injured children. **New this year:** A Start/Finish line Marathon Mile Champion to send you on your way and welcome you back from your journey!
- **Drexel and Main Streets in Bexley** A perfect place to take in the fall colors and amazing homes. Fun fact: Bexley is home to more ice cream shops per capita than anywhere in Ohio.
- **Nationwide Children's Hospital** The Nationwide Children's Hospital Columbus Marathon & 1/2 Marathon will run past two sides of Nationwide Children's Hospital on 18th St. and Livingston Avenue. There will be bands and hundreds of signs to represent those Children Champions who have been raising money for Nationwide Children's Hospital.
- **Schiller Park** This German Village treasure is bordered by Reinhard, Jaeger and Deshler Streets. This year marks the 157th birthday of this beloved and scenic park.
- **Short North Arts District** Between Nationwide Blvd. and Fifth Ave. — enjoy window shopping at the art galleries and boutique shops and have a cup of joe from one of the local coffee shops while you wait to see your athlete.



COURSE HIGHLIGHTS

- **Upper Arlington** Upper Arlington is the stretch of course between The Ohio State University and King Avenue. It welcomes athletes with its beautiful homes and gardens. Fun fact: It is the hometown of world-famous golfer Jack Nicklaus.
- **Grandview Heights** Enjoy Grandview Avenue with its unique neighborhood boutiques and incredible restaurants.
- **Victorian Village** Neil Avenue with its gorgeous Victorian style homes and beautiful trees will be a welcome reprieve for athletes as they head toward the finish line. Buttles Avenue and Park Street borders Goodale Park, another historic park in Columbus.
- **Celebration Village** Featuring the Columbus Marathon store, PR Gong presented by White Castle, the Raising Cane's Family Meet Up Zone and more!

NOTE: There will also be an Information Booth on Spring Street and McConnell Blvd. as you enter Celebration Village.

STOP BY
Saucy Brew Works'
special cheer zone
featuring sign making
station, noisemakers
and more, at 443
West 3rd Avenue,
near mile 24!



SELF-GUIDED BIKE TOUR

Take our self-guided bicycle tour to several cheer spots along the course!

We have partnered with **COGO Bike Share** to put together a route to follow on a bike (see a list of COGO stations here that are close to the startline) that will let you visit key spots while not interfering with the race.

The 1-day Access Pass costs \$8 and includes unlimited 30-minute classic bike rides. The first 30 minutes of each ride are included in the access pass. If you keep a bike out for longer than 30 minutes at a time, it's an extra \$0.15 per minute. Timer resets when you dock. You can upgrade to an ebike for just \$0.15 per minute. Visit the station map on cogobikeshare.com or download the Lyft app for real-time bike and dock availability.



cogobikeshare.com

Download the RTRT app to see the Self-Guided Bike Tour.

SELF-GUIDED BIKE TOUR		
Ride to see athletes in the FIRST 13 MILES of the 2024 Nationwide Children's Hospital Columbus Marathon.		
MILE	DIRECTIONS	COGO STATIONS
0.8	★ START at Ohio Statehouse, Southwest corner of Third St. and E. Broad St.	High St. & Broad St. 3rd St. & Gay St.
	S Ride SOUTH on Third St. to State St.	
	↪ Turn LEFT, ride EAST on State St. to Grant Ave.	Library Park N & S Grant Ave.
	↪ Turn LEFT onto Grant Ave., then ride to Oak St.	
	↪ Turn RIGHT, ride EAST on Oak St. to 18th St.	Parsons Ave. & Oak St.
9.0	W Ride WEST on Oak St. to Parsons Ave.	
	↪ Turn LEFT, ride SOUTH on Parsons Ave. to Livingston Ave.	
9.5	● STOP & CHEER at Nationwide Children's Hospital (corner of Livingston & Parsons)	Livingston Park at Livingston & Ann St.
	W Ride WEST on Livingston Ave. to 4th St.	
12.5	● STOP & CHEER at Livingston Ave. United Methodist Church (corner of Livingston & 4th)	
	N Ride NORTH on 4th St. to Gay St.	4th St. & Rich St. 3rd St. & Gay St.
12.5	↪ Turn LEFT, ride WEST on Gay St. to High St.	
	● STOP & CHEER at corner of Gay & High Streets	
	E Ride EAST on Gay St. to Third St.	
12.5	↪ Turn RIGHT, ride SOUTH on Third St. to Ohio Statehouse, Southwest corner of 3rd St. and E. Broad St.	
	● RIDE OVER – Thank You!	Broad St. & High St., Rich St. at Columbus Commons, 4th St. & Rich St.

OPTIONAL – Ride from Gay & High Streets to Marathon & 1/2 Marathon FINISH LINE.		
12.5	E Ride EAST on Gay St. to 4th St.	3rd St. & Gay St.
	↪ Turn LEFT, ride NORTH on 4th St. to Goodale St.	
	↪ Turn LEFT, ride WEST on Goodale St. to Convention Center Dr.	
	↪ Turn LEFT, ride SOUTH on Convention Center Dr. road curves beneath Convention Center to Vine St.	
	↪ Turn LEFT, ride WEST on Vine St. to Neil Ave.	
12.5	↪ Turn LEFT and ride SOUTH on Neil Ave. to Nationwide Blvd.	Neil Ave. & Nationwide Blvd.
	↪ Turn LEFT onto Nationwide Blvd., ride EAST to McFerson Park.	
12.5	↪ Turn RIGHT and go to bike parking area in McFerson Park.	Neil Ave. & Nationwide Blvd., Nationwide Arena & Front St. and Sensenbrenner Park at Nationwide Blvd. & High St.

Ride to see athletes in the MILES 13-26 of the 2024 Nationwide Children's Hospital Columbus Marathon.		
MILE	DIRECTIONS	COGO STATIONS
24.5	★ START at Finish Line, ride NORTH on Neil Ave. to Buttles Ave.	Neil Ave. & Buttles Ave.
	↪ Turn LEFT, ride WEST on Buttles Ave. to Harrison Ave.	
	↪ Turn RIGHT, ride NORTH on Harrison Ave. to 2nd Ave.	
	↪ Turn LEFT, ride WEST on 2nd Ave. to Pennsylvania Ave.	
23.8	↪ Turn RIGHT, ride NORTH on Pennsylvania Ave. to 3rd Ave.	Michigan Ave. & 3rd Ave.
	● STOP & CHEER at the Katalina's Café (corner of Pennsylvania & 3rd)	
23.8	S Ride SOUTH on Pennsylvania Ave. to Second Ave.	
	↪ Turn RIGHT, ride WEST on Second Ave. to Perry St.	
	↪ Turn RIGHT, ride NORTH on Perry St. to Third Ave.	
23.8	↪ Turn LEFT, ride WEST on Third Ave. to the Olentangy Bike Path (on the right, before crossing bridge)	
	N Ride NORTH on the Olentangy Bike Path through OSU campus to Woody Hayes Dr.	Lane Ave. at Olentangy Trail
16.8	● STOP & CHEER at Ohio Stadium.	
	S Return to the Olentangy Bike Path, ride SOUTH to Goodale St.	
16.8	↪ Leave Bike Path, turn RIGHT, ride WEST on Goodale St. to Bobcat Rd.	
	↪ Turn RIGHT, take Bobcat Rd. to First Ave.	
22.4	● STOP & CHEER at the corner of Bobcat Rd. & First Ave.	
	↪ Return on Bobcat to Goodale St., turn LEFT, and take Goodale St. to Neil Ave.	
22.4	↪ Turn RIGHT, ride SOUTH on Neil Ave. to Nationwide Blvd.	Neil Ave. & Nationwide Blvd.
	↪ Turn RIGHT onto Nationwide Blvd., ride EAST to McFerson Park.	
22.4	↪ Turn RIGHT and go to bike parking area in McFerson Park.	Neil Ave. & Nationwide Blvd., Nationwide Arena & Front St. and Sensenbrenner Park at Nationwide Blvd. & High St.

GETTING AROUND COLUMBUS ON RACE WEEKEND

TRANSPORTATION

No car? No problem.



Getting around town is easy. Feel free to visit **Experience Columbus** for all your transportation needs.

Additionally, we wanted to highlight some options:

- **Central Ohio Transit Authority (COTA), (614) 228-1776.** Normal one-way bus fare is \$2, children 5 to 12 are \$1, children 4 and under are free.
- **CoGo Bike Share offers 365 bicycles at 46 stations.** CoGo is fun, easy, affordable and available 24 hours a day, 365 days a year. Additionally, COGO is partnering with the Columbus Marathon this year to provide a self-guided bike tour of the course.
- **Yellow Taxi, (614) 444-4444.** The average fare from Port Columbus International Airport to downtown is \$22. Uber and Lyft are also available.
- **Rental cars of all types** are available in every corner of the city. Check with Thrifty, Dollar and Enterprise.



THINGS TO DO & SEE

For the thousands of you who are from outside of Columbus, make sure to check out **Experience Columbus** to see all the great attractions, entertainment, dining, shopping, museums and just general fun options available in Columbus.

And for those of you who want to take a closer look at some of the great communities the race course goes through and landmarks it passes by, check out the following:

- The Arena District
- The City of Bexley
- Columbus Museum of Art
- Downtown Columbus
- Franklin Park Conservatory
- German Village
- Grandview Heights
- Harrison West
- Nationwide Children's Hospital
- Ohio Stadium
- Ohio Statehouse
- The Short North Arts District/
Victorian Village
- Upper Arlington



fly to the finish

Nationwide® is proud to play a part in making miracles happen. Since 2012, the Marathon has helped raise over \$13 million for the hospital to support lifesaving research and care for kids like our patient champion, Ali — who admires the strength and beauty of butterflies as they overcome all odds to take unimaginable journeys.

We hope this year's runners are inspired by Ali as they soar toward a victory of their own.



Nationwide®

Proud Sponsor of the

**NATIONWIDE
CHILDREN'S HOSPITAL
COLUMBUS
MARATHON**

Nationwide and the Nationwide N and Eagle are service marks of Nationwide Mutual Insurance Company. © 2024 Nationwide CPR-1549AO (09/24)



Every Step Counts

Joining forces with Nationwide Children's Hospital, we're helping to pave the way for all children and their families to have brighter futures.

aepohio.com



An AEP Company

NATIONWIDE CHILDREN'S HOSPITAL
COLUMBUS MARATHON

Good Luck 2024 Nationwide Children's Hospital
Columbus Marathon & 1/2 Marathon Athletes!

We're looking forward to celebrating with you on Sunday!



TAKE \$10 OFF
YOUR PURCHASE OF \$50 OR MORE*

To learn more about how DICK'S supports the community, visit DICKS.com.

AMERICA'S #1
RUNNING DESTINATION



P00050506O241DN3N

TAKE \$10 OFF YOUR PURCHASE OF \$50 OR MORE

*Limit one coupon per customer. Excludes: taxes, prior purchases, gift cards, extended warranties, licenses, store credit, services or excluded items detailed in-store or at DICKS.com/Exclusions. Minimum purchase amount is calculated after other discounts and before tax. Cannot be combined with other offers. No reproductions or rain checks accepted. Offer not accepted at DICK'S Warehouse Sale store or Going, Going, Gone!.
Coupon valid 10/20/24-11/6/24.

EVERY SEASON STARTS AT DICK'S SPORTING GOODS!

Proud sponsor of the
Nationwide Children's Hospital
Columbus Marathon.



A BETTER TOMORROW STARTS TODAY



At Greif, we are committed to delivering innovative and sustainable packaging solutions that not only meet our customers' needs but also contribute to a better future. Our dedication to community involvement and caring for others is at the heart of everything we do.

Let's work together to create a brighter future for all!



PACKAGING SUCCESS TOGETHER™

 www.greif.com



Bella,
Safelite Mile
Champion

Start strong. Finish stronger.

At Safelite, we're proud to support Nationwide Children's Hospital and the groundbreaking work they do to make miracles happen for kids every day.



NATIONWIDE
CHILDREN'S HOSPITAL
COLUMBUS
MARATHON



Save the Date

Health & Fitness Expo
OCTOBER 17-18, 2025

Nationwide Children's Hospital Columbus Marathon & 1/2 Marathon
OCTOBER 19, 2025



columbusmarathon.com